

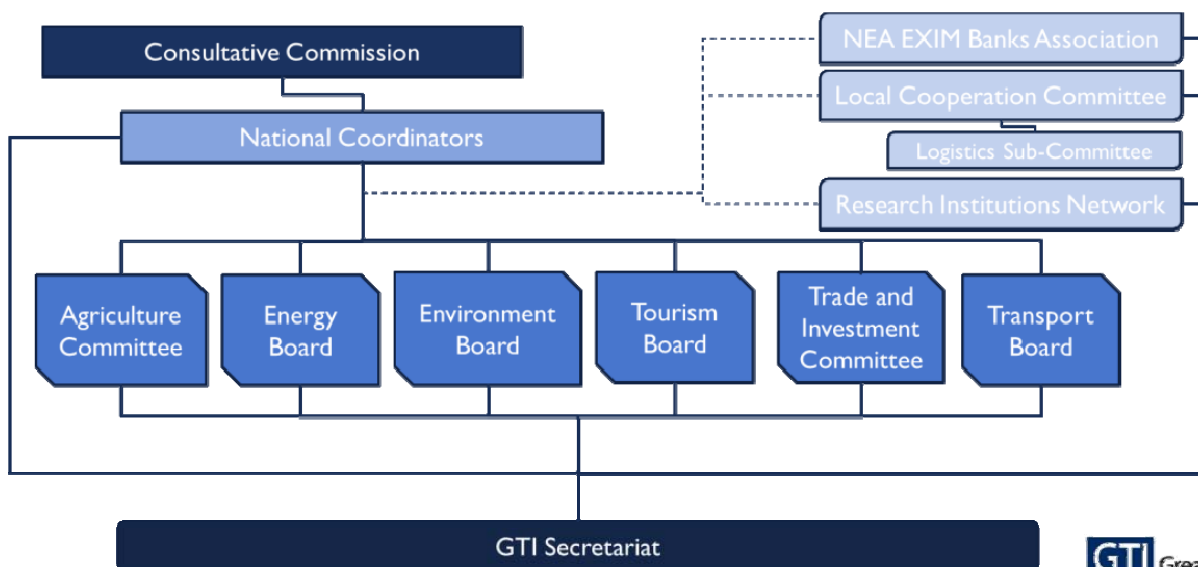


REGIONAL INTEGRATION UNDER THE GTI FRAMEWORK: GTI PLATFORM FOR REGIONAL COOPERATION

BY TUGULDUR BAAJIIKHUU
DIRECTOR, GTI SECRETARIAT

THE 111TH GSDM PLATFORM SEMINAR:
"TOWARD NORTHEAST ASIAN ECONOMIC INTEGRATION"
ORGANIZED BY ERINA
SEPTEMBER 7, 2018, TOKYO, JAPAN

GTI'S ORGANIZATIONAL STRUCTURE



GTI – A PLATFORM FOR REGIONAL COOPERATION

“removing barriers to **free trade** in the region, increasing the free movement of people, **labor**, **goods**, and **capital** across **borders**, and adopting cohesive regional stances on policy issues, such as the environment, climate change and migration.”

GTI’s institutional structure and operational framework

GTI: well-suited existing structure to promote regional integration in GTR and NEA

GTI Greater Tumen Initiative

CREATING VALUE-ADDED

Strategic Framework for GTI’s development

Existing comparative advantage

- only existing platform than brings together the countries in the NEA region



Value creation:
Institutional and capacity development

- Augmenting GTI investment facilitation capacity
- Development of knowledge management functions
- Structural enhancement for committees:
 - *New committee* - business cooperation
 - *“Thematic task forces”* for committees

Institutional development plan

Value creation:
Operational enhancement – programmatic approach

- Area(s) specific focus for sectors/committees
- Development of “programs” for sectors – set of activities/projects for unified purpose/outcome

Operational plan

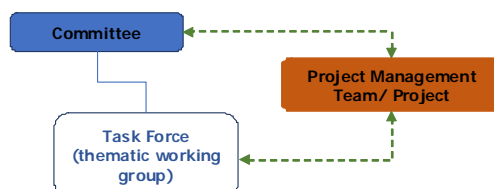
GTI Greater Tumen Initiative

INVESTMENT FACILITATION MECHANISM

<p>Functions</p>	<ul style="list-style-type: none"> • facilitator that seeks to match priority GTI investment proposals with potential investors • know the formulation cycles for partnership strategies of development banks • develop project proposal screening criteria and GTI's project document templates • repository of knowledge, a ready source of reference both for project developers
<p>Input by members states/ stakeholders</p>	<ul style="list-style-type: none"> • Genuine capital contributions • Business Cooperation Association's involvement • Investment promotion agencies • Development partners' recommendations for improvement of investment environment
<p>Activities & work flow</p>	<ul style="list-style-type: none"> • Operations manual : roles & responsibilities; investment cycles of investors/national agencies, • KPIs, performance assessment reports • GTI Investment Report & Project Proposal Evaluation Summaries • Project Review Board: NCs, Committees, EBA

ENHANCED STRUCTURE

<p>New Committee</p>	<ul style="list-style-type: none"> • Business cooperation association • Collaboration with the private sector to create enabling environment for promotion of business, identifying the needs of private sector in various dimensions and finding ways to address challenges faces by businesses
<p>Thematic task forces</p>	<ul style="list-style-type: none"> • Specific direction i.e. theme or development issue • Maintain engagement to by elaborating of approaches and identifying solutions and measures i.e. project-oriented activities • Setting up of dedicated structures in form of so-called thematic task forces or expert groups



PROJECT DEVELOPMENT, PROGRAMMATIC APPROACH

Focus on specific area

- coordinative platform which brings stakeholders together to collectively think with a target and goal-oriented approach to achieve a specific development objective

Program "building"

- linking smaller processes, groups of processes or sub-projects under the framework of one bigger project or, a program

ROAD AHEAD BY SECTORS: TRANSPORT

VISION: INTEGRATED TRANSPORT NETWORK

- **Transportation routes** and routing plans proposed in the previous studies and strategies need **revisiting, improvement and updating**.
- **Projects are integral part of the "whole system"** and the viability and efficiency of the these "individual" projects depend on overall structure of the corridor and/or infrastructure
- Development of **integrated multimodal i.e sea-land transport network**
- **Intergovernmental arrangements** will remove inconsistencies and obstacles for project development and implementation and align and harmonize cross-border systems and procedures

MANAGEMENT STRUCTURE FOR TRANSPORT CORRIDORS

- Multinational body that "overlooks functionality of corridors ensuring project implementation and corridor operability, controls performance of corridors" and tackles arising issues

PROMOTION OF SEA-LAND ROUTES THROUGH TRIAL

- Intensify cooperation within the Logistics Sub-Committee to promote the sea-land intermodal routing:
 - Carrying out number of new pilot testing projects in different routes
 - Information sharing and analyses
 - Operation of a Joint Working Group

ROAD AHEAD BY SECTORS: TRADE AND INVESTMENT

HARMONIZATION OF SYSTEMS

- **Technical:** Development of cross-border paperless trade and single window system – next phase task force on cross-border electronic data exchange
- **Regulatory:** Implementation of trade facilitation agreements – i) implementation of WTO TFA, ii) signing of Multilateral Recognition Agreement on AEO

INFORMATION SHARING

- Provision of “area specific inquiries”, e.g. sourcing of information on trade regulations, customs procedures, and SPS requirements
- Organized through creation of a web-based digital platform

PRIVATE SECTOR EXCHANGE

- **Business cooperation association**
 - Regular B-2-G and B-2-B exchange on specific themes
 - Regional expos and forums: improve content and structure of existing events making them more productive and result-oriented

TRADE AND INVESTMENT ROUNDTABLE

- Regularized, biannual
- platform for monitoring the development of trade and investment promotion among member countries, assessing and analyzing performance and outcome of different development activities and providing policy recommendation, practical guidance and proposal for follow-up actions.

ROAD AHEAD BY SECTORS: ENERGY

NEA ENERGY SUPER GRID

- Continued exchange involving financial institutions

INTERGOVERNMENTAL ENERGY COOPERATION MECHANISM

- Launching an **intergovernmental mechanism** among NEA countries to coordinate cooperation in energy and support development and implementation of projects
- Joint enhanced mechanism **institutionalized** for regular dialogue and exchange
- Provide **institutional support** to realization of energy connectivity projects in a form of expert groups, project teams, outreach to project sponsors, approaching financial institutions and facilitating investment processes
- **NEA regional power interconnection forum** (UNESCAP and stakeholders)

ROAD AHEAD BY SECTORS: *TOURISM*

MULTI-DESTINATION TOURISM

- Multiple cross-border points of destinations packaged into "single tourism destination"
- Single purpose, theme or event orientation
- Supported by comprehensive marketing strategy and an infrastructure for promotion of tourism products and destinations
- Capacity building of tourism authorities, especially local, and tour operators in marketing and planning
- FAM tours

DIGITAL PROMOTION PLATFORM

- Unified regional statistical and information database and web-based promotional platform
- Promotional platform integrated with social networks:
- Build social media capacity in the region, make local experiences available online to an international audience, offer businesses a platform for social commerce
- Facilitate B-to-B and B-to-C exchange

BRANDING UNDER GTI

- Facilitate participation of tourism operators and agencies in international regional tourism events to promote their networking, marketing and cooperation i.e. joint product development/integration
- GTI countries' joint exposition in regional and international tourism fairs and exhibitions
- Uniting under one brand – GTI specific brand



ROAD AHEAD BY SECTORS: *ENVIRONMENT*

TRANSBOUNDARY AIR POLLUTION

- Lack scientific and relevant data-sharing that in turn curbs down the well-informed and adequate decision-making
- Support mechanisms for scientific research and assessment
- Complex regional policy and planning, collaborative actions in program development, attracting resources



ROAD AHEAD BY SECTORS: AGRICULTURE

REGIONAL AGRIBUSINESS VALUE CHAIN

- **Agriculture supply chain development** through promotion of agriculture trade
 - streamlining of trans-boundary plant and animal disease control
 - addressing barriers to agricultural trade
 - public-private partnerships for investment in agriculture
- **Value-added production** in supply chain management
- Identification and development of **corridors**

SPS WORKING GROUP

- **Focus:** cross-border facilitation i.e complying with quarantine requirements and procedures, reinforcing sanitary and phytosanitary (SPS) requirements and streamlining trans-border procedures
- **Activities and modality:**
 - expertise and knowledge exchange and transfer,
 - technology transfer, capacity building,
 - collaboration with custom and quarantine authorities and
 - development of necessary supporting processes and procedures including mutual recognition arrangements

ROAD AHEAD: STRENGTHENED INSTITUTION

Investment facilitation capacity, knowledge management

- Investment facilitation processes
- Knowledge and information repository, database and inquiry

Thematic, programmatic approach

- Area specific focus – project and program development
- Project development as part of a program

Revitalization of committees' work

- B-2-G, B-2-B exchange platform, support to project development
- Theme/area specific task force to pursue project development/implementation

"Full-coverage"

- Perspectives, strategies and plans across sector include "whole-of-the-region" i.e. Japan and DPRK

Robust intergovernmental platform for regional cooperation and integration in Northeast Asia, developing itself as a mechanism for policy and information exchange and joint actions tackling regional development issues by implementing concrete activities in form of infrastructure projects, improvement and harmonization of systems and policies to foster regional integration across economic sectors, knowledge sharing, information and expertise exchange, studies, researches, capacity building and networking.

Institutionalization to progress further;
organizational preparedness for legal transition

REGIONAL INTEGRATION UNDER THE GTI FRAMEWORK:
GTI - PLATFORM FOR REGIONAL INTEGRATION

Thank you for your attention.

